



Model No. of filter in photograph is:
HDP-BC

Features and Benefits

- Manual water drain
- Optional fuel pre-heater and water sensor
- Small envelope size offers greater flexibility in mounting locations
- Low investment cost due the economical design
- Long service life of the element yields low operating costs
- Seamless installation due to the plug and play
- Easy adaption to the on-board power supply
- Unsurpassed water removal for ULSD

1.5 gpm
5.6 L/min

14.5 psi
1 bar
suction side application

Mobile machines and commercial vehicles are subject to the toughest working conditions. To ensure smooth running of vehicles, and to protect both the engine and the whole drive system from damage, optimum diesel fuel conditioning is particularly important. Schroeder Fuel Filtration's On-Board Diesel Coalescing filter offers a modern cartridge filter system available in two versions, which protects vehicle operators from failures, breakdowns and expensive service interventions.

Introduction



INDUSTRIAL



MOBILE VEHICLES



BULK OIL FILTRATION



MARINE



AGRICULTURE

Applications

Flow Rating: Up to 1.5 gpm (5.6 L/min)

Operating Pressure: <14.5 psi, (<1 bar) *suction side application*

Temperature Range: -40°F to 194°F (-40°C to 90°C)

Nominal Voltage: 24V DC (optional 12V DC)

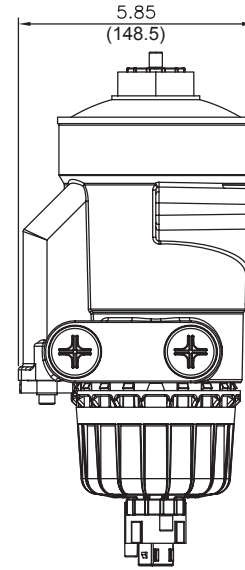
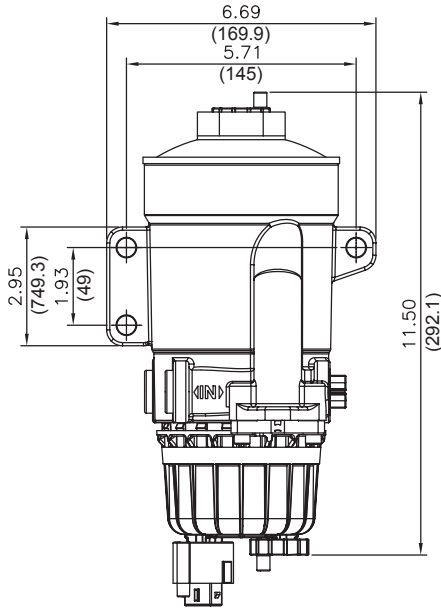
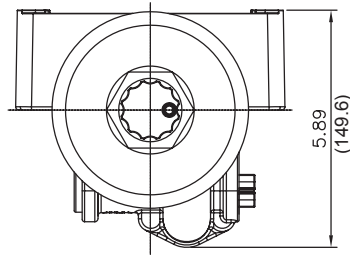
Rated Power Fuel Preheating: 300W

Weight of HDP-BC: 5.1 lbs (2.3 kg)

Water Separation Efficiency: >95% to ISO CD 16332

Connection Size: M22 x 1.5" Inlet/Outlet

Filter Housing Specifications



Metric dimensions in ().

Installation instructions included on element.

Element Particulate Performance Information

Element	Filtration Efficiency Per ISO 19438		Dirt Retention Per ISO 19438
	n > 10µm (c)		to DP
10µm	> 99%		300 mbar m > 42g

Element Water Coalescing Performance Information

Element	Suction Side Coalescing Per ISO CD 16332	
	Max Flow	Single Pass Efficiency
10µm	158 gal/h	> 95%

Flow Direction: Outside In
 Element Nominal Dimensions: 4.0" (100.6 mm) O.D. x 8.6" (217.6 mm) long

NOTE:
 Based on Diesel Fuel
 Type A, Water
 Concentration: 1500 ppm

On-Board Diesel Coalescing Filter | Manual Drain

HDP-BC

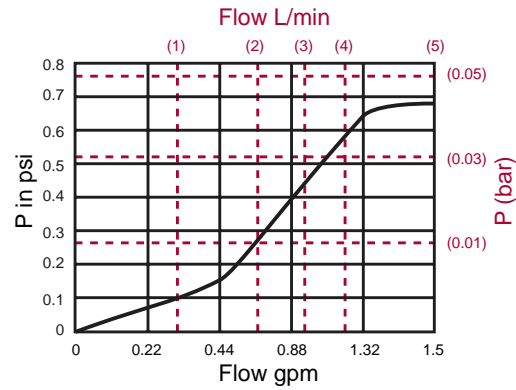
Fuel Oils

- ULSD15 and similar petroleum diesels
- Biodiesel and blends
- Synthetic diesel and blends

Fluid Compatibility

$\Delta P_{\text{housing}}$

HDPBC $\Delta P_{\text{housing}}$ for fluids with sp gr= 0.86:



sp gr = specific gravity

Notes

Pressure Drop Information Based on Flow Rate and Viscosity

Size	Evolution Stage	Filtration Rating	Filter Material	SI Code
0340	BC1	7 = 7 μm	KF1	K6
		10 = 10 μm		
		30 = 30 μm		

Replacement Elements

On-Board Diesel Coalescing Filter | Manual Drain

Filter Model Number Selection

How to Build a Valid Model Number for a Schroeder HDP-BC:

BOX 1	BOX 2	BOX 3	BOX 4	BOX 5	BOX 6	BOX 7	BOX 8	BOX 9	BOX 10
HDP									

Example: Note: One option per box

BOX 1	BOX 2	BOX 3	BOX 4	BOX 5	BOX 6	BOX 7	BOX 8	BOX 9	BOX 10	= HDPKF1340BC110W 1XAS1K6
HDP	KF1	340	BC1	10	W	1	X	AS1	K6	

BOX 1	BOX 2	BOX 3	BOX 4	BOX 5
Filter Series	Filter Material	Size	Evolution Stage	Filtration Rating
HDP	KF1	340	BC1	7 = 7 µm 10 = 10 µm (Standard) 30 = 30 µm

BOX 6	BOX 7	BOX 8	BOX 9	BOX 10
Type of Clogging Indicator	Type Code	Modification Number	Options	SI Code
W - no clogging indicator	1	X	AS1 - with integrated water sensor H1 - with integrated fuel pre-heating	K6